

Bergerda AC servo system catalogue



- AC servo
- Stepping drive motor
- Induction asynchronous servo
- Linear motor drive
- Industry-specific servo
- Control product integration customization

Serving customers and adding value to customers

Company Profile

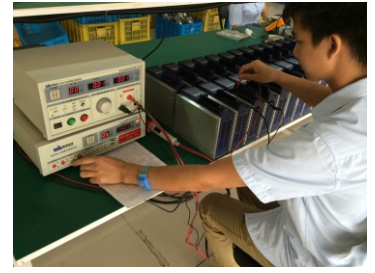
Hangzhou Bergerda Automation Technology Co., Ltd. is located in a beautiful paradise on earth - Hangzhou, China. It is a high-tech enterprise that provides global customers with servo, stepping, frequency conversion, brushless motor drive control products, and industrial drive control solutions. Excellence in product development, efficient and high-quality production, enthusiastic and caring service. Always take the customer's needs as its responsibility.

Bergerda's motor control products include AC servo drives and servo motors, stepping drives and stepping motors, inductive asynchronous servo drives and motors, linear motor DD motors and drives, and custom control solutions for all types of industries. Widely used in textile packaging, CNC machine tools, printing, embroidery, sculpture, advertising, laser, electronics and other automated machinery. At present, there are twelve types of stepping systems, including three series of B series, D series and E series, nearly 30 kinds of specifications servo systems, NS digital series and LS closed loop series. S series induction asynchronous servo, L series linear motor servo and DD motor drive. T-series CNC turret-dedicated servos and P-series plastic machinery-specific servos and so on which include control and control integrated industrial solutions. We have become a professional company with a complete product line in Chinese motion control industry. Perfect pre-sale, sales, after-sales service, from customer design machine selection, equipment debugging, post-maintenance, always with patience, enthusiasm, professional service to return customers.

The company fully implements the concept of "professional, quality, and service". With high-tech products, excellent quality, and high-quality services, customers can be assured of their ease of use, adding value to customers and realizing the long-term development of the company.

Based in the domestic market, Bergerda has established sales and service networks in Zhejiang, Jiangsu, Guangdong, Fujian, Shandong, Hunan and Guangxi. In foreign markets, products are exported to the United States, Brazil, Colombia, Russia and other countries and regions.





Contents

Servo driver and motor model description	1
D Series AC Servo	2
E series absolute AC servo	4
High voltage series AC servo	6
Embroidery machine servo	8
SD100, SD200 series CNC machine servo	9
Industry-specific servo customization	10
40, 60 series AC servo motor	11
80 series AC servo motor	12
110 series AC servo motor	13
130 series AC servo motor	14
180 series AC servo motor	15
High-voltage series AC servo motor	16
Appendix A: Servo Drive Installation Dimensions	17
GEL series absolute value servo motor installation dimension drawing	19



Drive Model Significance

SD D 08 N K8 D-X
1 2 3 4 5 6 7

- 1、 AC servo driver
- 2、 Series code
B: Universal 1
D: Universal 2
E: Absolute type
- 3、 output power
08:0.8 KW
13:1.3KW
20:2KW
- 4、 Input voltage
N : 220v
H : 380V
- 5、 Shape code : K7、 K8、 K9、 K10、 K11、 K12
- 6、 Version identification code : A、 B
- 7、 Affiliated features

Motor Model Significance

130 SM-M 04 25 M A L-Z
1 2 3 4 5 6 7 8 9

- 1、 Motor mounting flange : 40、 60、 80、 110、 130、 180
- 2、 AC servo motor
- 3、 Photoelectric encoder
- 4、 Torque : 04:4N.M
- 5、 Speed : 30-3000Turn25-2500Turn
- 6、 Manufacturer code : M、 N、 G、 Z
- 7、 encoder
A : 2500 line incremental
D : 2500 Line line-saving
E : 17Bit absolute
- 8、 Voltage : L : 220V
H : 380V
- 9、 Attributes : Z : Brake

D Series AC Servo



Series features

- ◇ International leading control platform and algorithm.
- ◇ Matches a variety of incremental, line-saving encoders
- ◇ Position speed and torque control functions, and can switch each other
- ◇ Equipped with RS485 communication interface for multiple serial control
- ◇ PLC. Built-in 4 point-to-point internal PLC function, eliminating PLC in repeated positioning
- ◇ A variety of intelligent monitoring functions and operation panel for customer debugging and diagnosis
- ◇ Can be matched with 0.1KW-7.5KW full range of servo motor, international motor standard
- ◇ Input/output ports can be freely defined and have strong applicability
- ◇ Full series CE certification

Applications

A variety of input and output signals and functions can be defined, built-in simple PLC functions and powerful RS485 communication functions. In the occasion of repeated positioning, PLC can be omitted, thus simplifying the control system and improving the stability of the entire electronic control system.

Suitable for the following occasions

Repeated positioning control occasions;
occasions with multiple input and output requirements; Network Communication Applications

Mature application industry

- ◆ Industrial robots
- ◆ semiconductor equipment
- ◆ engraving equipment
- ◆ measuring instrument equipment
- ◆ medical equipment
- ◆ robots.

Specification sheet for order

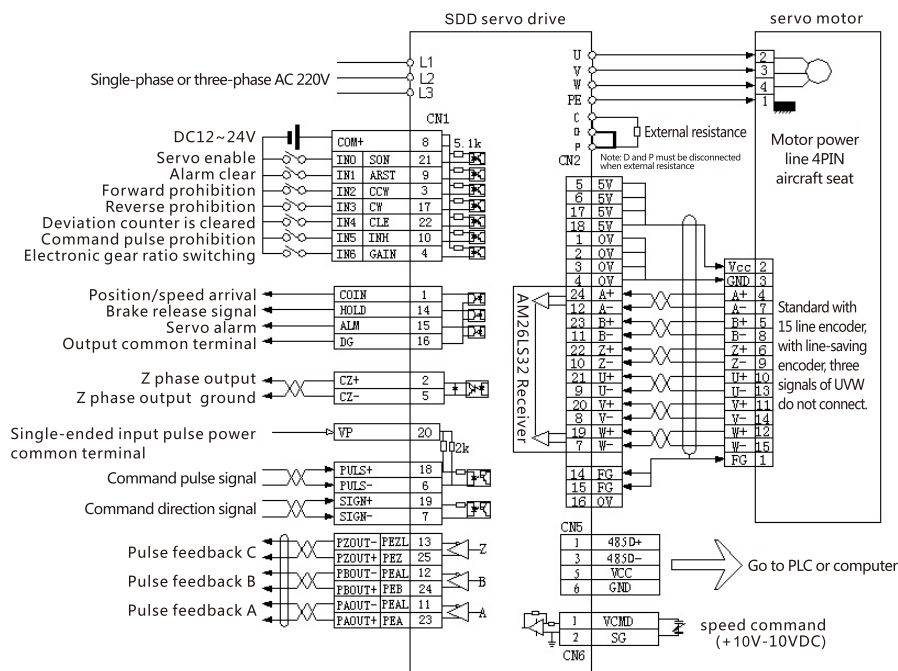
Servo model	motor model	Power(KW)	Rated speed(r/min)	Rated torque(Nm)
SDD04NK7D	40SM-M00230NAL	0.05	3000	0.16
	40SM-M00330NAL	0.1	3000	0.32
	60SM-M00630NAL	0.2	3000	0.64
	60SM-M0130NAL	0.4	3000	1.27
SDD08NK8D	60SM-M0230NAL	0.6	3000	1.91
	80SM-M0230NAL	0.75	3000	2.4
	80SM-M0425NAL	1.0	2500	4.0
SDD13NK9D	110SM-M0430NAL	1.2	3000	4.0
	110SM-M0530NAL	1.5	3000	5.0
SDD20NK9D	110SM-M0630NAL	1.8	3000	6.0
SDD13NK9D	130SM-M0425NAL	1.0	2500	4.0
	130SM-M0525NAL	1.3	2500	5.0
SDD20NK9D	130SM-M0625NAL	1.5	2500	6.0
	130SM-M0825NAL	2.0	2500	7.7
	130SM-M1025NAL	2.5	2500	10.0
SDD50NK10D	130SM-M1525NAL	3.8	2500	15.0
	180SM-M1915NAL	3.0	1500	19.0
	180SM-M2220NAL	4.5	2000	22.0
	180SM-M2715NAL	4.3	1500	27.0

D Series AC Servo

Performance Specifications

External connection	Input power	single-phase AC170~253V	
		50/60Hz	
	control type	SVPWM control	
Internal function	encoder	2500 saving-line	
	Display and operation	Six bits seven-segment display LED: Four function keys	
	Control mode	Position control/speed test run/jog run/internal positioning PLC function/RS485 communication	
	Braking function	built-in	
Position control mode	Protection function	Undervoltage, overvoltage, overload, overcurrent, encoder abnormality, brake abnormal, position excess error, etc.	
	Command control method	External pulse	
	External command pulse input	Form	pulse + direction ;CW/CCW pulse ;A/B quadrature
		Maximum frequency	Differential: 1MHZ open collector: 200KHZ
Speed control mode	Electronic gear ratio	1~32767/1~32767	
Input/output signal	Internal speed control	I/Oterminal control	
	Position signal output	Output type	ABZ phase drive output / Z phase collector open circuit output
		Frequency division ratio	1/255/~1
	input signal	7points photoelectric isolation input	1) Servo enable 2) Alarm clear 3) Deviation counter clear/speed select 1 4) Command pulse inhibit/speed select 2 5) Position 0 6) Position 1 7) Position trigger
output signal	4points open collector	1) Servo ready output 2) Servo alarm output 3) Z signal output 4) Brake output	
Use environment	temperature	Working: 0°C~55°C Storage: -20°C~80°C	
	humidity	Less than 90% (without condensation)	

Typical application wiring diagram

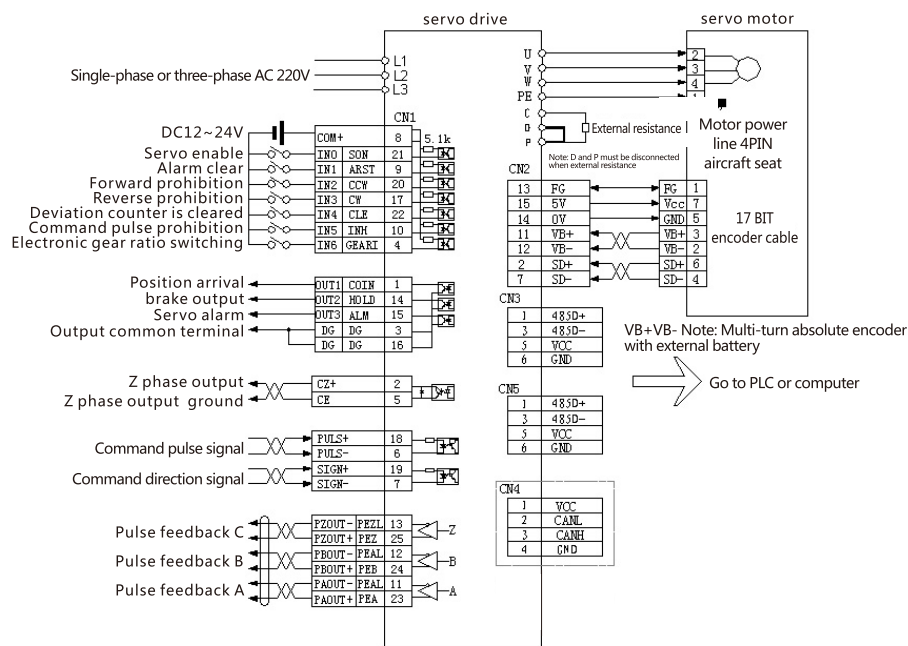


E series absolute AC servo

Performance Specifications

External connection	Input power	single-phase AC170~253V	
	control type	50/60Hz	
	encoder	SVPWM control	
Internal function	Display and operation	17Bit absolute	
	Control mode	Six bits seven-segment display LED: Four function keys	
	Braking function	Position control/speed test run/jog run/internal positioningPLC function/RS485 communication	
	Protection function	built-in Undervoltage, overvoltage, overload, overcurrent, encoder abnormality, brake abnormal, position excess error, etc.	
Position control mode	Command control method	External pulse	
	External command pulse input	Form	pulse + direction ;CW/CCW pulse ;A/B quadrature
		Maximum frequency	Differential: 2MHZ open collector: 200KHZ
Electronic gear ratio	1~32767/1~32767		
Speed control mode	Internal speed control	I/Oterminal control	
Input/output signal	Position signal output	Output type	ABZ phase drive output / Z phase collector open circuit output
		Frequency division ratio	1/255/~1
	input signal	7points photoelectric isolation input	1) Servo enable 2) Alarm clear 3) Deviation counter clear/speed select 1 4) Command pulse inhibit/speed select 2 5) Position 0 6) Position 1 7) Position trigger
	output signal	4points open collector	1) Servo ready output 2) Servo alarm output 3) Z signal output 4) Brake output
Use environment	temperature	Working: 0°C~55°C Storage: -20°C~80°C	
	humidity	Less than 90% (without condensation)	

Typical application wiring diagram



High voltage series AC servo

Series features

- ◇ Advanced digital control algorithm for high-precision positioning
- ◇ Can be matched with 1000, 5000, 8192, and other encoders for more precise positioning
- ◇ IPM intelligent module design, with complete include function
- ◇ A variety of intelligent monitoring functions and operation panel for customer debugging and diagnosis
- ◇ 380V input power design saves transformer costs
- ◇ High input voltage, large torque and acceleration



Specification sheet for order

Servo model	motor model	Power(KW)	Rated speed(r/min)	Rated torque(Nm)
SDD30HK10D	130SM-M0825MAH	2.0	2500	7.7
	130SM-M1025MAH	2.5	2500	10.0
	130SM-M1525MAH	3.8	2500	15.0
SDD55HK11	180SM-M1915MAH	3.0	1500	19.0
	180SM-M2220MAH	4.5	2000	21.5
	180SM-M2715MAH	4.1	1500	27.0
	180SM-M3515MAH	5.5	1500	35.0
SDD75HK12	180SM-M4815MAH	7.5	1500	48.0

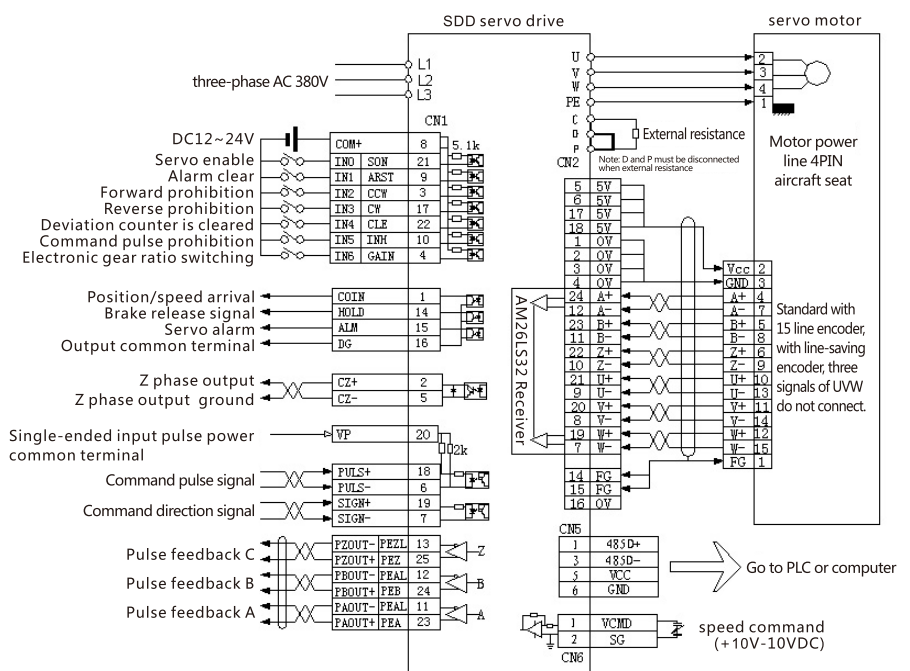
Applications

Servo drive designed for 180 flange 2KW-7.5KW series servo motor. With features of high integration and large function, it is easy to obtain large torque and acceleration.

- Mature application industry
- Cross cutting machine
- Winder
- CNC machining center



Typical application wiring diagram

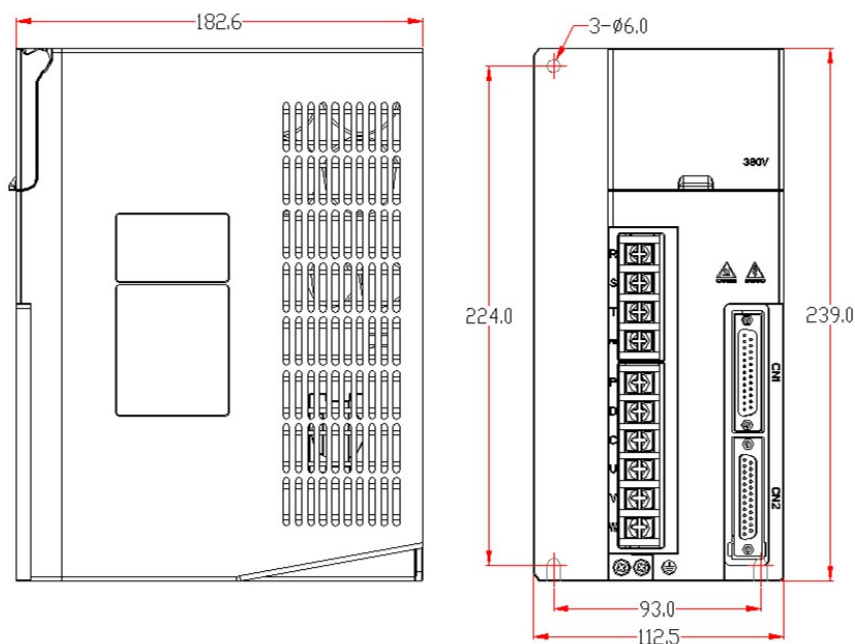


High voltage series AC servo

Performance Specifications

External connection	Input power		Three-phase AC300~450V
			50/60Hz
	control type		SVPWM control
Internal function	encoder		Incremental encoder 2500PPR/5000PPR/8192PPR
	Display and operation		Six bits seven-segment display LED: Four function keys
	Control mode		Position control/analog voltage speed control/speed test run/jog run
	Braking function		built-in
Position control mode	Protection function		Undervoltage, overvoltage, overload, overcurrent, encoder abnormality, brake abnormal, position excess error, etc.
	Command control method		External pulse
	External command pulse input	Form	pulse + direction ;CW/CCW pulse
		Maximum frequency	Differential: 500KHZ Open Collector: 200KHZ
Electronic gear ratio		1~32767/1~32767	
Speed control mode	External analog voltage	voltage range	+10V
Input/output signal	Position signal output	Output type	ABZ phase drive output / Z phase collector open circuit output
		Frequency division ratio	1/255/~1
	input signal	4points photoelectric isolation input	1) Servo enable 2) Alarm clear 3) Deviation counter clear/speed select 1 4) Command pulse disable/speed select 2
	output signal	4points open collector	1) Servo ready output 2) Servo alarm output 3) Z signal output 4) Brake output
Use environment	temperature		Working: 0°C~55°C Storage: -20°C~80°C
	humidity		Less than 90% (without condensation)

Typical application wiring diagram



Embroidery machine servo



Series features

- ◇ Advanced control algorithm for high-precision positioning
- ◇ Can be adapted to Dahao, Shanlong, Tianhong, Jialichuang and other kinds of embroidery electronic control
- ◇ Fast parking response and stable speed
- ◇ Stable performance and simple operation
- ◇ Complete product line, spindle servo, XY frame servo, towel embroidery servo
- ◇ Supply whole set of servo motor and drive

Specification sheet for order

Servo model	Servo model	motor model	Power(KW)	Rated speed(r/min)	Rated torque(Nm)
Flat embroidery three-one axis	SDV-303	110DH-M0630MAL	1.8	3000	6.0
Double spindle	SDV-302A	130DH-M1520MALF	3.0	2000	15.0
XY frame servo	SDV-302B	110DH-M0630MAL	1.8	3000	6.0
Spindle servo	SDD10NK9	130SM-M0425MAL	1.0	2500	4.0
	SDD13NK9	130SM-M0525MAL	1.3	2500	5.0
	SDD20NK9	130SM-M0825MALF	2.0	2500	7.7
	SDD26NK9	130SM-M1025MALF	2.6	2500	10.0
	SDD30NK10	130SM-M1520MALF	3.0	2000	15.0
High-voltage spindle servo	SDD30HK10	130SM-M1520MAHF	3.0	2000	15
	SDD55HK11	130SM-M1820MAHF	3.6	2000	18
	SDD55HK11	180SM-M2220MAHF	4.5	2000	22
XY frame servo	SDD20NK9	110SM-M1020MAL	2.0	2000	10

Application product



SD100/SD200 series CNC machine servo

Series features

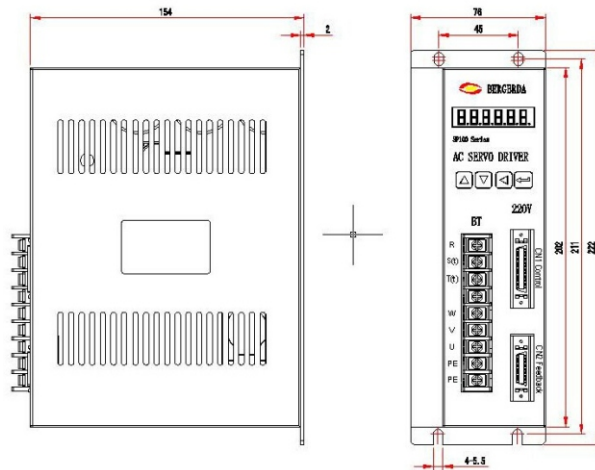


- ◇ Complete specifications, can match the entire system of 100,130 flange servo motor
- ◇ Good stability, fast response, strong anti-interference ability, high precision
- ◇ Installation size, interface, parameter settings are compatible with the market mainstream, easy to install and debug
- ◇ Input internal power supply and control circuit power supply internal short circuit, no external jumper, convenient wiring
- ◇ With position and speed analog control, including encoder feedback function to facilitate the composition of semi-closed closed loop numerical control system
- ◇ Maturely used in all kinds of lathes, milling machines, boring machines, drilling machines, grinding machines, punching machines, machining centers
- ◇ Optional 2500P/R, 5000P/R and other encoders for more precise positioning

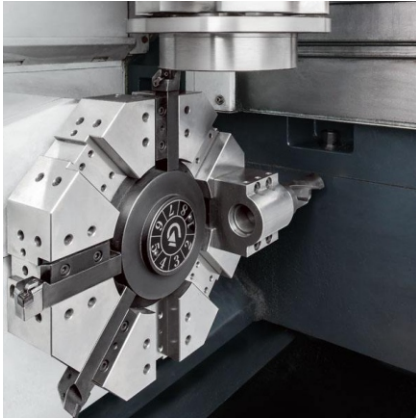
Specification sheet for order

Servo model	Servo model	motor model	Power (KW)	Rated speed(r/min)	Rated torque(Nm)
SD100-2AB	SD200-2AD	110SM-M0430MAL	1.2	3000	4.0
SD100-2AB	SD200-2AD	110SM-M0530MAL	1.5	3000	5.0
SD100-3AB	SD200-3AD	110SM-M0620MAL	1.2	2000	6.0
SD100-3AB	SD200-3AD	110SM-M0630MAL	1.8	3000	6.0
SD100-2AB	SD200-2AD	130SM-M0425MAL	1.0	2500	4.0
SD100-2AB	SD200-2AD	130SM-M0525MAL	1.3	2500	5.0
SD100-3AB	SD200-3AD	130SM-M0625MAL	1.5	2500	6.0
SD100-3AB	SD200-3AD	130SM-M0825MAL	2.0	2500	7.7
SD100-3AB	SD200-3AD	130SM-M1015MAL	1.5	1500	10.0
SD100-3AB	SD200-3AD	130SM-M1025MAL	2.5	2500	10.0
SD100-3AB	SD200-3AD	130SM-M1515MAL	2.3	1500	15.0
SD100-3AB	SD200-3AD	130SM-M1525MAL	3.8	2500	15.0

Installation dimension drawing



Industry-specific servo customization



- Mature custom products:
- CNC servo tool magazine dedicated drive
- Drilling and attack center dedicated drive
- Computer quilting machine dedicated drive
- Integrated gantry synchronous triaxial drive

★ ★ ★ Customized various motor driver solutions according to customer requirements, integrated drive control solution ★ ★ ★

Company certificate



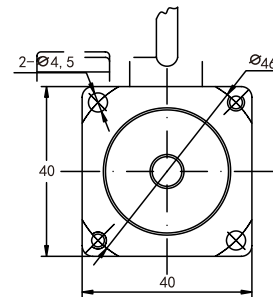
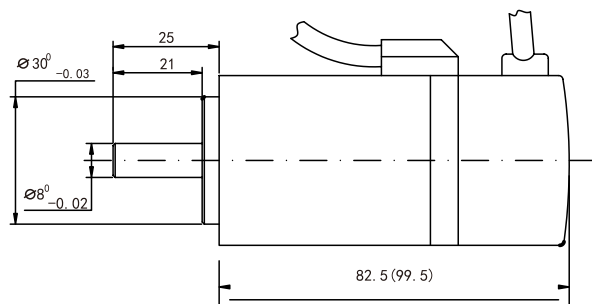
40, 60 series AC servo motor

Specification model

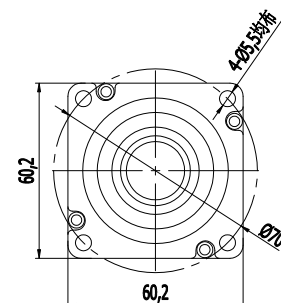
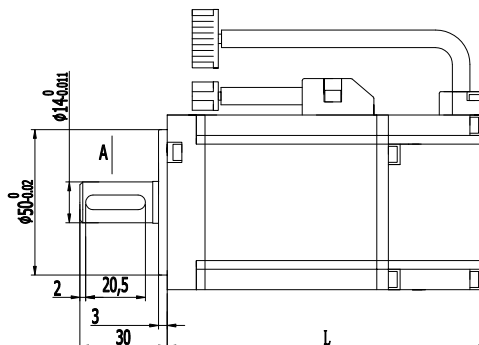
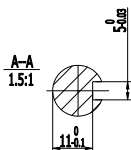


motor model	40SM-M00230MAL	40SM-M00330MAL	60SM-M00630MAL	60SM-M0130MAL	60SM-M0230MAL											
rated power (KW)	0.05	0.1	0.2	0.4	0.6											
Rated voltage (V)	220	220	220	220	220											
Rated current (A)	0.7	1.3	1.2	2.8	3.5											
Rated Speed (RPM)	3000	3000	3000	3000	3000											
Rated torque (N.M)	0.16	0.32	0.637	1.27	1.91											
Peak torque (N.M)	0.48	0.96	1.91	3.9	5.73											
Back EMF (V/1000r/min)	10	15	30.9	29.6	34											
Torque coefficient (N.M/A)	0.23	0.25	0.53	0.45	0.55											
Rotor inertia (KG.M ²)	0.025x10 ⁻⁴	0.046x10 ⁻⁴	0.17x10 ⁻⁴	0.29x10 ⁻⁴	0.39x10 ⁻⁴											
winding resistance (Ω)	30.8	11.5	6.18	2.35	1.93											
Winding inductance (MH)	24.5	10.9	29.3	14.5	10.7											
Electrical time constant (MS)	0.8	0.95	4.74	6.17	5.5											
weight (KG)	0.46	0.59	1.16	1.63	2.07											
Number of encoder lines(PPR)	2500															
insulation class	Class B(130°C)															
Safety class	IP65															
Use environment	Temperature : -20°C~+40°C;humidity : relative humidity < 90% (No dewing)															
Motor winding socket	Winding lead	U (black)		V (blue)		W (Brown)		PE(Yellow green)								
	Socket number	1		2		3		4								
Encoder socket	Signal leads	5V	0V	B+	Z-	U+	Z+	U-	A+	V+	W+	V-	A-	B-	W-	PE
	Socket number	2	3	4	5	6	7	8	9	10	11	12	13	14	15	1

Installation dimension drawing



A-A
∴ 1 F 1



Motor model	0.6N.M	1.3N.M	1.9N.M
Without Brake L(mm)	116	141	169
With electromagnetic brake L(mm)	148	173	201

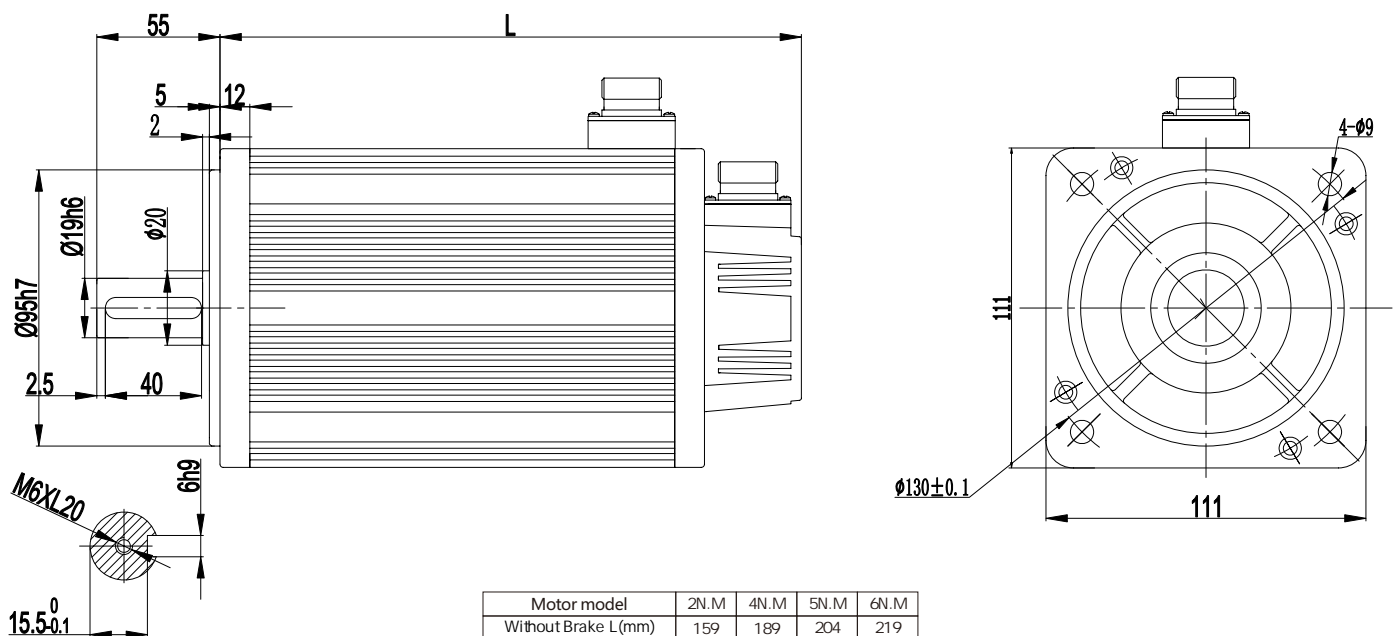
110 series AC servo motor

Specification model



motor model	110SM-M0230MAL	110SM-M0420MAL	110SM-M0430MAL	110SM-M0530MAL	110SM-M0620MAL	110SM-M0630MAL										
rated power (KW)	0.6	0.8	1.2	1.5	1.2	1.8										
Rated voltage (V)	220	220	220	220	220	220										
Rated current (A)	2.5	3.5	5.0	6	4.5	6.0										
Rated Speed (RPM)	3000	2000	3000	3000	2000	3000										
Rated torque (N.M)	2	4	4	5	6	6										
Peak torque (N.M)	6	12	12	15	12	18										
Peak current (A)	7.5	10.5	15	18	13.5	18										
Back EMF (V/1000r/min)	56	79	54	62	83	60										
Torque coefficient (N.M/A)	0.8	1.14	0.8	0.83	1.3	1.0										
Rotor inertia (KG.M ²)	0.31x10 ⁻³	0.54x10 ⁻³	0.54x10 ⁻³	0.63x10 ⁻³	0.76x10 ⁻³	0.76x10 ⁻³										
winding resistance (Ω)	3.6	2.41	1.09	1.03	1.46	0.81										
Winding inductance (MH)	8.32	7.3	3.3	3.43	4.7	2.59										
Electrical time constant (MS)	2.3	3	3.0	3.3	3.2	3.2										
weight (KG)	4.5	5.5	5.5	6.1	6.7	6.7										
Number of encoder lines(PPR)	2500															
insulation class	Class F(130°C)															
Safety class	IP65															
Use environment	Temperature : -20°C~+40°C ;humidity : relative humidity < 90% (No dewing)															
Motor winding socket	Winding lead	U (black)		V (blue)		W (Brown)	PE(Yellow green)									
	Socket number	2		3		4	1									
Encoder socket	Signal leads	5V	0V	A+	B+	Z+	A-	B-	Z-	U+	V+	W+	U-	V-	W-	PE
	Socket number	2	3	4	5	6	7	8	9	10	11	12	13	14	15	1

Installation dimension drawing



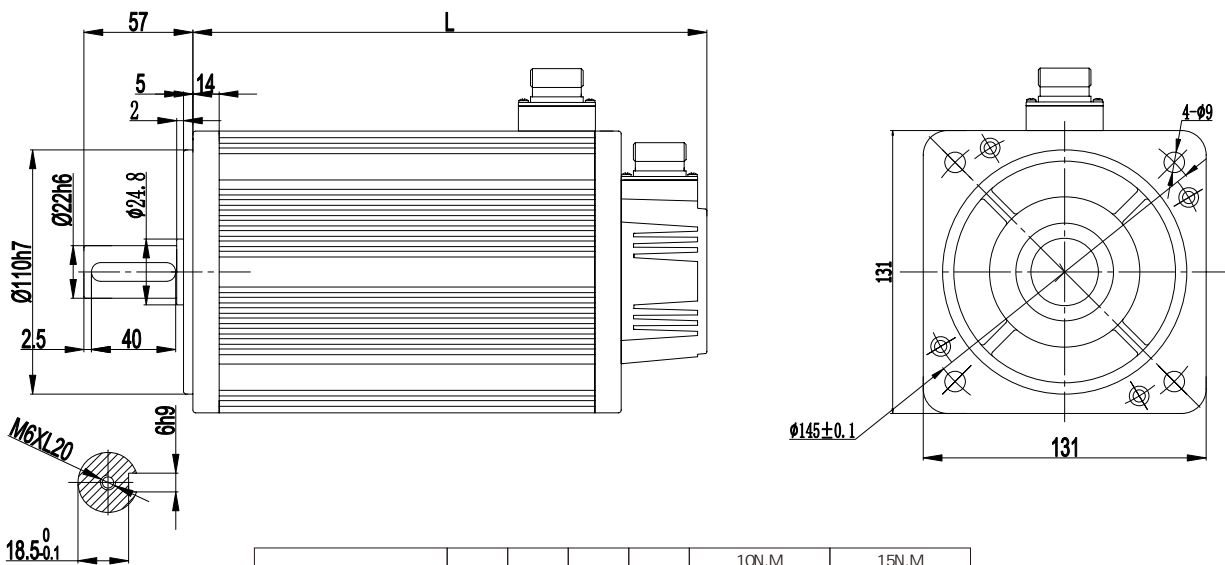
Motor model	2N.M	4N.M	5N.M	6N.M
Without Brake L(mm)	159	189	204	219
With electromagnetic brake L(mm)	233	263	278	293
Permanent magnet brake L	215	245	260	275

130 series AC servo motor

Specification model

motor model	130SM-M0425MAL	130SM-M0525MAL	130SM-M0625MAL	130SM-M0825MAL	130SM-M1010MAL	130SM-M1015MAL	130SM-M1025MAL	130SM-M1525MAL								
rated power (KW)	1.0	1.3	1.5	2.0	1.0	1.5	2.6	3.8								
Rated voltage (V)	220	220	220	220	220	220	220	220								
Rated current (A)	4.0	5.0	6.0	7.5	4.5	6.0	10	13.5								
Rated Speed (RPM)	2500	2500	2500	2500	1000	1500	2500	2500								
Rated torque (N.M)	4	5	6	7.7	10	10	10	15								
Peak torque (N.M)	12	15	18	22	20	25	25	30								
Peak current (A)	12	15	18	22.5	13.5	18	28	27								
Back EMF (V/1000r/min)	72	68	65	68	140	103	70	67								
Torque coefficient(N.M/A)	1.0	1.0	1.0	1.03	2.2	1.67	1.0	1.11								
Rotor inertia (KG.M ²)	0.85x10 ⁻³	1.06x10 ⁻³	1.26x10 ⁻³	1.53x10 ⁻³	1.94x10 ⁻³	1.94x10 ⁻³	1.94x10 ⁻³	2.77x10 ⁻³								
winding resistance (Ω)	2.76	1.84	1.21	1.01	2.7	1.29	0.73	0.49								
Winding inductance(MH)	6.42	4.9	3.87	2.94	8.8	5.07	2.45	1.68								
Electrical time constant(MS)	2.32	2.66	3.26	3.8	3.26	3.93	3.36	3.43								
weight (KG)	7.7	8.2	8.9	10	11.5	11.5	11.5	11.7								
Number of encoder lines(PPR)	2500															
insulation class	Class F(130°C)															
Safety class	IP65															
Use environment	Temperature : -20°C~+40°C;humidity : relative humidity < 90% (No dewing)															
Motor winding socket	Winding lead	U (black)			V (blue)			W (Brown)			PE(Yellow green)					
	Socket number	2			3			4			1					
Encoder socket	Signal leads	5V	0V	A+	B+	Z+	A-	B-	Z-	U+	V+	W+	U-	V-	W-	PE
	Socket number	2	3	4	5	6	7	8	9	10	11	12	13	14	15	1

Installation dimension drawing



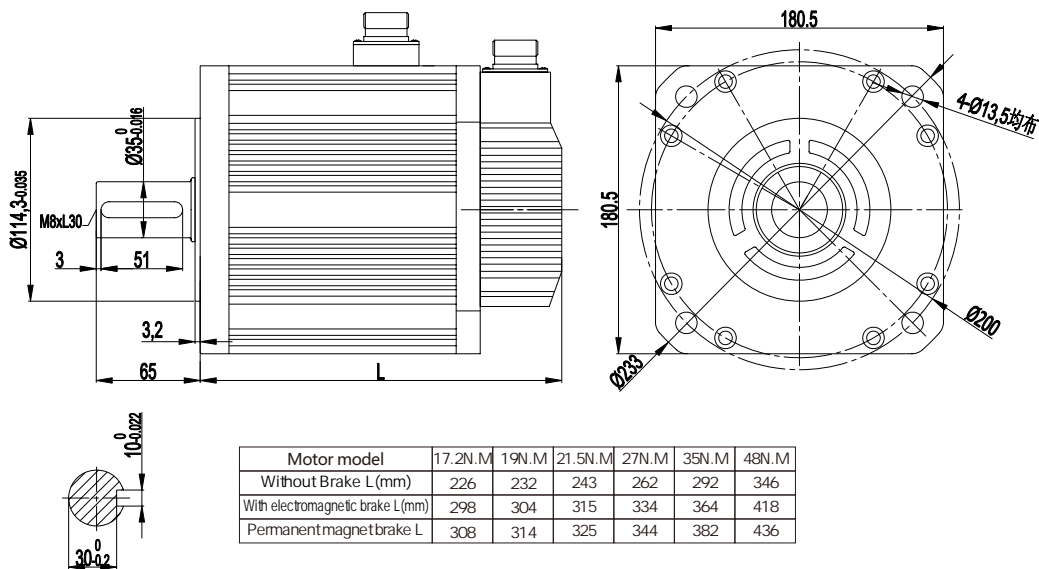
Motor model	4N.M	5N.M	6N.M	7.7N.M	10N.M		15N.M	
					1500rpm	2500rpm	1500rpm	2500rpm
Without Brake L (mm)	166	171	179	192	213	209	241	231
With electromagnetic brake L (mm)	223	228	236	249	294	290	322	312
Permanent magnet brake L	236	241	249	262	283	279	311	301

180 series AC servo motor

Specification model

motor model	180SM-M1915MAL	180SM-M2220MAL	180SM-M2715MAL	180SM-M3515MAL													
rated power (KW)	3.0	4.5	4.3	5.5													
Rated voltage (V)	220	220	220	220													
Rated current (A)	12	16	16	24													
Rated Speed (RPM)	1500	2000	1500	1500													
Rated torque (N.M)	19	21.5	27	35													
Peak torque (N.M)	47	53	67	70													
Back EMF (V/1000r/min)	97	84	103	90													
Torque coefficient (N.M/A)	1.58	1.34	1.69	1.45													
Rotor inertia (KG.M ²)	3.8×10 ⁻³	4.7×10 ⁻³	6.1×10 ⁻³	8.6×10 ⁻³													
winding resistance (Ω)	0.4	0.24	0.28	0.14													
Winding inductance (MH)	2.42	1.45	1.74	1.0													
Electrical time constant (MS)	6	6	6.2	7.14													
weight (KG)	20.5	22.2	25.5	30.5													
Number of encoder lines(PPR)	2500																
insulation class	Class F(155°C)																
Safety class	IP65																
Use environment	Temperature : -20°C~+40°C;humidity : relative humidity < 90% (No dewing)																
Motor winding socket	Winding lead	U (black)				V (blue)				W (Brown)				PE(Yellow green)			
	Socket number	2				3				4				1			
Encoder socket	Signal leads	5V	0V	A+	B+	Z+	A-	B-	Z-	U+	V+	W+	U-	V-	W-	PE	
	Socket number	2	3	4	5	6	7	8	9	10	11	12	13	14	15	1	

Installation dimension drawing

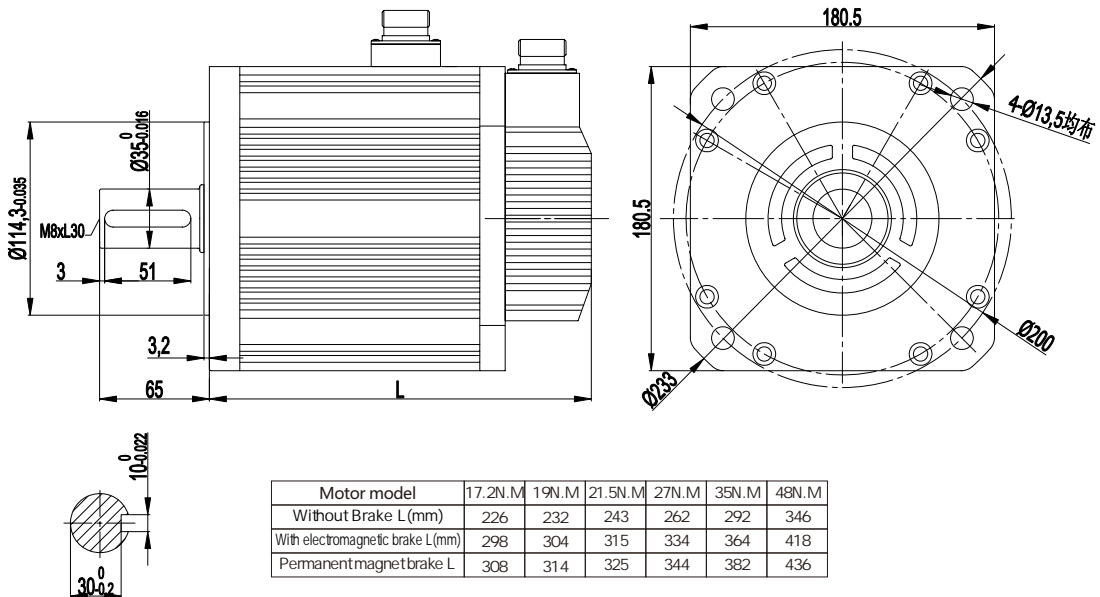


380 series AC servo motor

Specification model

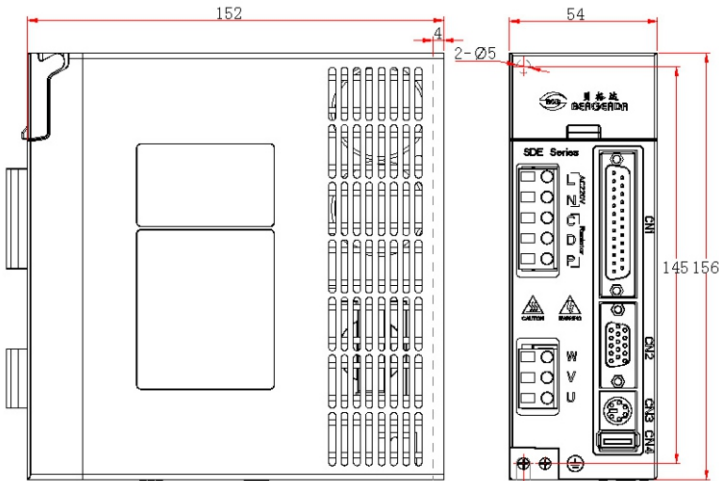
motor model	180SM-M1915MAH	180SM-M2220MAH	180SM-M2715MAH	180SM-M3515MAH	180SM-M4815MAH											
rated power (KW)	3.0	4.5	4.3	5.5	7.5											
Rated voltage (V)	380	380	380	380	380											
Rated current (A)	7.5	9.5	10	12	20											
Rated Speed (RPM)	1500	2000	1500	1500	1500											
Rated torque (N.M)	19	21.5	27	35	48											
Peak torque (N.M)	47	53	67	70	96											
Back EMF (V/1000r/min)	158	140	172	181	156											
Torque coefficient (N.M/A)	2.5	2.26	2.7	2.9	2.4											
Rotor inertia (KG.M ²)	3.8X10 ⁻³	4.7X10 ⁻³	6.1X10 ⁻³	8.6X10 ⁻³	9.5X10 ⁻³											
winding resistance (Ω)	1.15	0.71	0.79	0.62	0.27											
Winding inductance (MH)	6.4	4.0	4.83	4.0	2.14											
Electrical time constant (MS)	5.57	5.6	6	6.45	7.8											
weight (KG)	20.5	22.2	25.5	30.5	40											
Number of encoder lines(PPR)	2500															
insulation class	Class F(155°C)															
Safety class	IP65															
Use environment	Temperature : -20°C~+40°C;humidity : relative humidity < 90% (No dewing)															
Motor winding socket	Winding lead	U (black)			V (blue)			W (Brown)			PE(Yellow green)					
	Socket number	2			3			4			1					
Encoder socket	Signal leads	5V	0V	A+	B+	Z+	A-	B-	Z-	U+	V+	W+	U-	V-	W-	PE
	Socket number	2	3	4	5	6	7	8	9	10	11	12	13	14	15	1

Installation dimension drawing

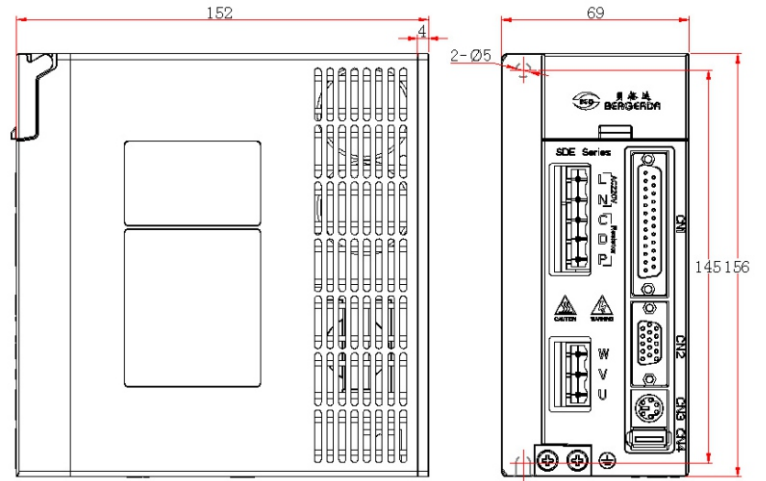


Appendix A: Servo Drive Installation Dimension drawing

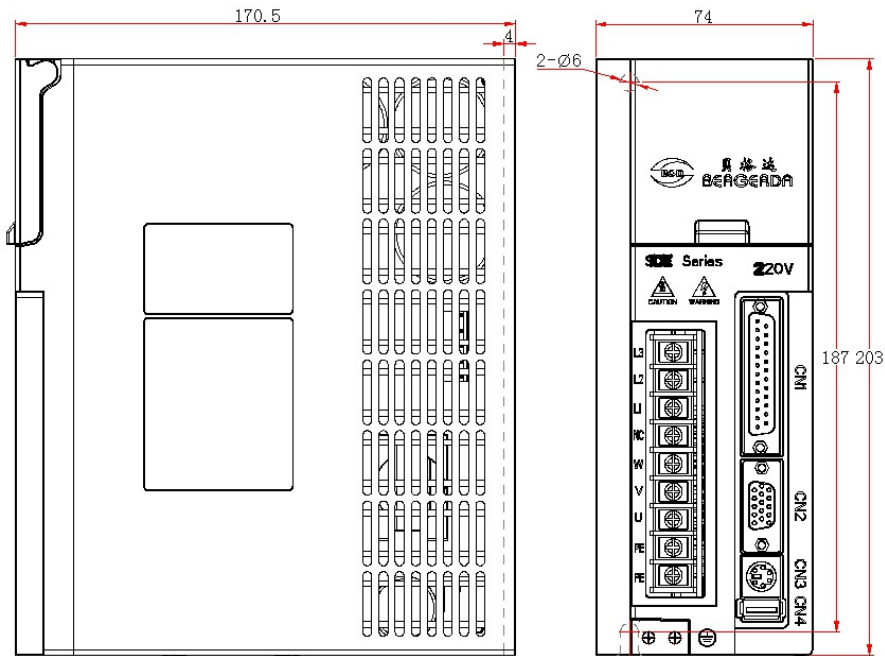
Installation dimension drawing



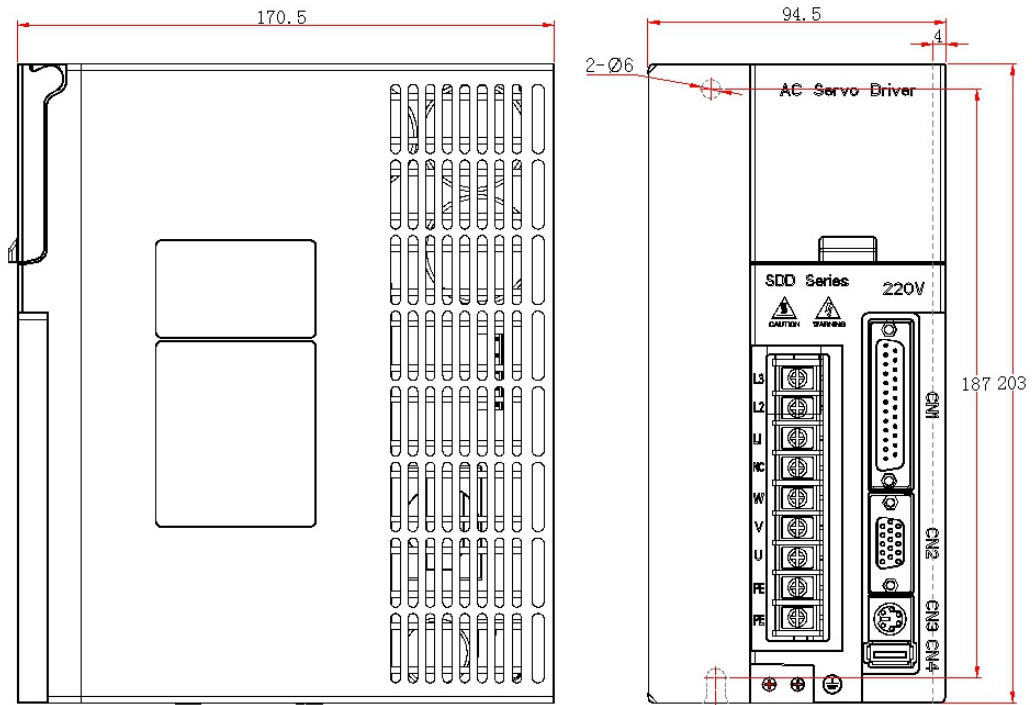
K7 installation dimension drawing



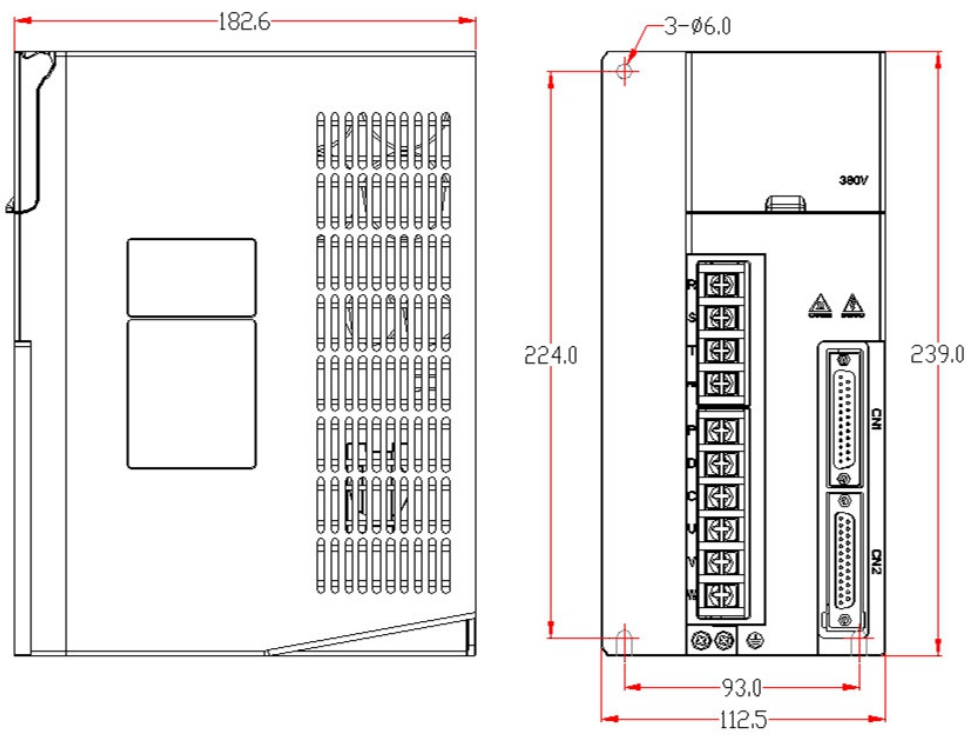
K8 installation dimension drawing



K9 installation dimension drawing

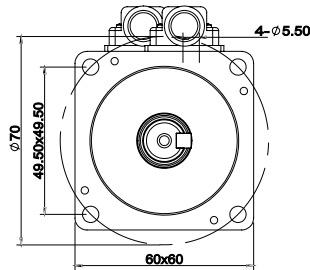
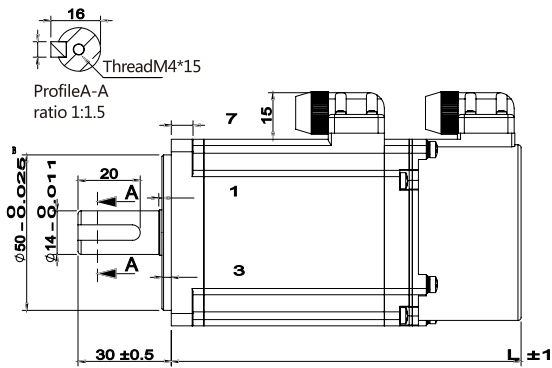
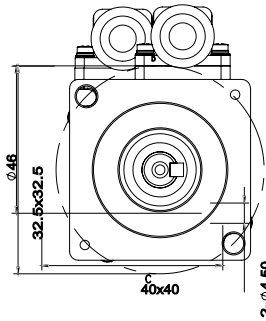
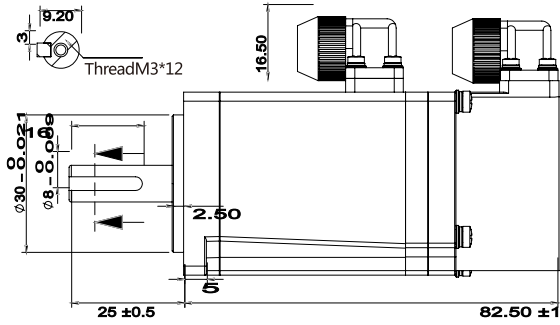


K10 installation dimension drawing

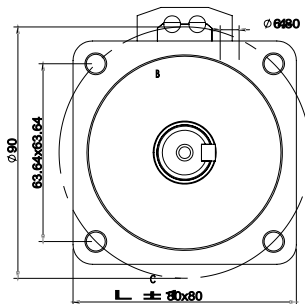
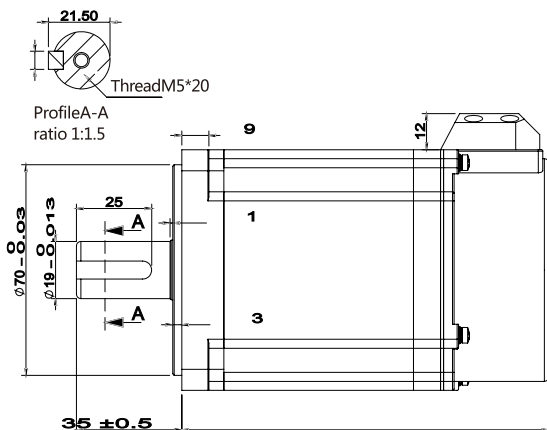


K11 installation dimension drawing

GEL series absolute value servo motor installation dimension drawing



Model	Length L(mm)
200W	90
200Wwith brake	127
400W	112
400Wwith brake	149



Model	Length L(mm)
750W	121
750Wwith brake	162
1KW	136
1KWwith brake	177

Our market



COMMITTED TO MACHINE INTELLIGENCE, FOCUS MOTOR CONTROL



Address: Building No.8 Sitai Technology Park, No.493 Linping Avenue, Yuhang District Hangzhou, China

Sale : 0086-571-88326782 Technical : 0086-571-88645851 Fax : 0086-571-89719501

Mail : sales@bergerda.com web : www.bergerda.com Post Code : 310030

Wuxi Office · Changzhou Office · Shandong Office · Ningbo Office · Taizhou Office · Shaoxing Office